



# WAYNE KELTS & KELTS TRANSPORT LTD. of CONSORT, AB.

Gate Sign: 35218 – Rg. Rd. # 41. SE-14-35-4-W4

**LOCATION:** From the Hwy. #12 & Hwy. # 41 intersection at Consort go 24 km east on Hwy. #12.  
**PREVIEWING & BIDDING WILL START JUNE 7 AT 10 AM & BIDS START CLOSING ON TUESDAY, JUNE 14 AT 10 AM**

## HIGHWAY TRACTORS



●2014 PETERBILT 389 highway tractor w/ sleeper, 986,297 km, 20,690 hours, 550 hp. ISX 15 Cummins engine, Eaton 18 speed manual transmission, 295/75R22.5 tires, grille guard, aluminum fenders & rims, dual stacks, beacon, A/C, cruise, power windows & locks, GVWR = 59,200 lb. diff. lock, air suspension, air brakes, air slide 5<sup>th</sup> wheel, heated mirrors, air seat, DEF is deleted, 4.10 axle ratio.



●2000 KENWORTH W900 highway tractor w/ sleeper, 2,142,932 km., 40,917 hours, 600 hp. Signature 600 Cummins engine, Eaton 18 speed manual transmission, 11R24.5 tires, LED lights, aluminum fenders & rims, 8 bag air suspension, diff. lock, dual stacks, beacon, 5<sup>th</sup> wheel lock switch, A/C, cruise, Webasto heater, 4.30 axle ratio, GVWR = 58,000 lb. Rebuilt transmission approx. 2 years ago. Rebuilt engine approx. 500,000 km ago.

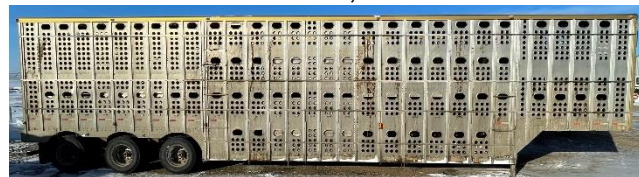


●1997 Peterbilt 379 highway tractor w/ sleeper, 550 hp. new Cat 3406E motor, 1,469,968 km., 4,938 hours, 18 speed Eaton Fuller manual transmission, 11R24.5 tires, grille guard, aluminum fenders & rims, dual stacks, air suspension, diff. lock, beacon, 5<sup>th</sup> wheel lock switch, 3.90 axle ratio. GVWR = 56,000 lb., 2,000 km on new motor.

## TRAILERS



●2011 DOEPKER Super B grain trailer, 28 ft. tri-axle lead & 30 ft. t/a rear trailers, Hendrickson air suspension, 11R24.5 tires, each trailer GVWR = 77,200 lb.



●2001 MERRITT 53 ft. tri-axle cattle liner, roll up door, 11R22.5 tires, GVWR = 74,500 lb.



●2007 DOEPKER Super B round bale hauling trailer, 32 ft. lead & 28 ft. rear trailers, Hendrickson air suspension, 11R22.5 tires.  
 ●1998 DOEPKER Super B round bale hauling trailer, 32 ft. lead & 28 ft. rear trailers.  
 ●1999 DOEPKER 48 ft. drop deck trailer, live roll.  
 ●1992 Norbert 20 ft. gooseneck stock trailer, center divider. GVWR = 15,650 LB.

## CRAWLER & TRACTORS

●CASE 1450 crawler w/ 12 ft. front blade.  
 ●1976 CASE 1070 tractor w/ Degelman 9 ft. front dozer blade, 9,713 hours, 108 hp., 23.1 X 34 tires, powershift, 2 hyd's., 540/1000 pto.  
 ●1975 IH 4366 Turbo 4WD tractor, 163 hp., 18.4X34 duals, 2 hyd's., engine needs work.  
 ●1971 Massey Ferguson 1500 4WD tractor, 3208 Cat engine, 23.1 - 30 tires, 2 hyd's.  
 ●1959 International 660 tractor w/ FEL & bale spear, 95 hp. diesel, 18.4 X 34 tires, 2 hyd's.  
 ●1956 IH W400 tractor, 48 hp. diesel, 540 pto.

## TILLAGE & SEEDING

●International 35 ft. deep tillage cultivator w/ 3 bar harrows, 12" spacing.  
 ●IH 620 double disc press drill & mover, 28 ft. (2 X 14 ft.), seed & fertilizer boxes.  
 ●John Deere 14 ft. double disc, smooth blades.  
 ●Rock-O-Matic bat reel type rock picker.

## RECREATION

●2007 HONDA TRX 500 quad, 17,662 km., 1,921 hours, 4X4, buddy seat, front winch, new brakes, brake cables & wheel bearings.  
 ●1984 Honda 200M big red trike.

## HAYING & HARVEST

●(2) - 2004 NEW HOLLAND BR780 round balers, (1) w/ Bale Command, (1) w/ Autowrap, 1000 pto.  
 ●2016 FARM KING Easy Rake 14 wheel "V" rake.  
 ●Homemade swath turner w/ NH 851 baler frame.  
 ●1995 Hesston 1170 16 ft. haybine, 540 pto.  
 ●1987 Massey Ferguson 860 s/p combine w/ 12 ft. p/u, 2,419 hours, chopper, grain loss monitors.  
 ●1979 Massey Ferguson 760 combine w/ 11 ft. p/u.  
 ●(4) - Versatile 400 s/p swathers, 18 ft. & 20 ft.  
 ●Swather mover.

## VEHICLES

●1997 Ford F-350 XLT super cab truck, manual, 4X4, 7.3 liter diesel, 332,532 km showing.  
 ●1995 Ford F-150 ext. cab truck, automatic.  
 ●1995 Ford F-250 XLT Lariat ext. cab parts truck.  
 ●1979 Ford F-150 reg. cab truck.  
 ●1941 & 1953 Chevrolet trucks.  
 ●1975 International F-1850 t/a gravel truck w/ 14 ft. steel box & hoist, diesel, GVWR = 44,860 LB.

## BINS, AUGERS, & TANKS

●Westeel ±3300 bushel grain bin on wood floor.  
 ●Lode King 2 compartment seed / fertilizer hopper bottom tank on skid, hydraulic driven unload auger.  
 ●Westfield W80-41 pto. driven grain auger, 8", 41'.  
 ●Westfield W70-36 grain auger w/ Kohler 14 hp. elec. start motor, 7", 36 ft..  
 ●(2) - 500 Gallon overhead fuel tanks w/ stands.  
 ●(2) - 135 Gallon slip tanks, 1 w/ 12V elec. pump.  
 ●400 Gallon water tank on s/a trailer.  
 ●100 Barrel water tank. ●400 Barrel oilfield tank.

## LIVESTOCK RELATED

●Highline 6600 bale processor.  
 ●Restored horse drawn buggy.  
 ●(3) - Heavy duty round bale feeders.  
 ●Portable corral panels & windbreaks.  
 ●Hi-Hog cattle squeeze. ●Calf cradle.  
 ●(4) - Sets of horse harness. ●Stock saddle.

## MISCELLANEOUS

●(3) - 40 Ft. seacans. ●South Bend metal lathe.  
 ●Quantity of 2 3/8" & 2 7/8" pipe. ●Pipe racks.  
 ●1/2" 4 ft. X 8 ft. steel sheet. ●Honda 13 hp. motor.  
 ●Loading ramp. ●Drill press. ●Cutting torch.  
 ●Linden postpounder w/ 3 way hydraulics.  
 ●Milleromatic mig welder. ●Plasma cutter.  
 ●Lincoln SA-200 welder & cables.  
 ●Dewalt cut-off saw. ●Metal tool chest.  
 ●Onan diesel generator / power plant.  
 ●±(80) Pallets farm items & more - SEE WEBSITE!

**PREVIEW HOURS: 9 AM - 7 PM starting June 7**  
**AUCTIONEER'S NOTE:** Wayne is retiring from the trucking business that his family has operated for over 50 years. The highway tractors look great & have been shedded. For more information call or text Wayne @ (403)-575-1412, OR call or text Dunkle Auctions @ (403)-740-6251.

**NO BUYER'S PREMIUM - REGISTER TO BID @ TIMED.DUNKLEAUCTIONS.COM**

**DUNKLE AUCTION SERVICES**  
 Call or text Owner - Wayne: (403)-575-1412  
 Dunkle Auctions: 1-877-UP4BIDS (874-2437)  
  
**NO BUYER'S PREMIUM**  
 AB License #209769  
  
**dunkleauctions.com**  
 Follow us on Facebook