

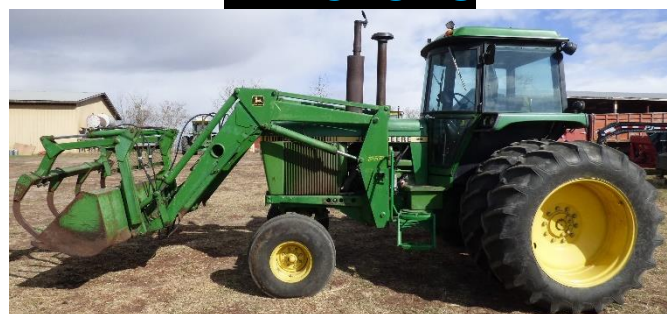


# ESTATE OF JOHN GALATIUK of BASHAW, AB.

**LOCATION:** From the Highway #21 & Highway #53 intersection at Bashaw go 0.4 km east on Highway #53 to 49<sup>th</sup> street & then go 2 km north to Township Road #421 & then go 1.2 km east. **GATE SIGN: 21226 - Twp. Rd. #421 ----- SE-10-42-21-W4**

**PREVIEWING OF ITEMS & TIMED ONLINE BIDDING  
WILL START ON TUESDAY, MAY 25 AT 10 AM & BIDS  
START CLOSING ON TUESDAY, JUNE 1 AT 10 AM**

## TRACTORS



●**1981 JOHN DEERE 4440 tractor** w/ JD 260 FEL, grapple, & 7 ft. bucket, 8,417 hours, 130 hp., 540/1000 pto., power quad transmission, 3 hyd's., 18.4 – 38 duals, shedded.



●**1972 JOHN DEERE 4020 tractor** w/ JD 158 FEL, grapple, & 7 ft. bucket, 7,372 hours showing, 101 hp. diesel, 540/1000 pto., 3 hyd's., 20.8 - 34 tires, shedded.



●**1968 JOHN DEERE 5020 tractor**, 8,020 hours showing, 133 hp. diesel, 1000 pto., 8F/2R syncro range transmission, 2 hyd's., 20.8 - 34 duals, shedded.

## BINS, AUGER, & TANK

- Wheatland ±600 bushel hopper bottom bin.
- Westeel Rosco ±1400 bushel grain bin.
- Sakundiak HD7-37 pto. driven auger, 7", 37 ft.
- Westeel 100 gallon slip tank w/ hand pump.

**AUCTIONEER'S NOTE:** There is a nice lineup of livestock equipment UP4BIDS in good condition. For more information call Dorothy @ (780)-781-0571, OR Dunkle Auctions @ (403)-740-6251.

## HAYING



●**2007 JOHN DEERE 568 round baler** w/ mega wide pickup, 15,652 total bales, large floatation tires, push bar, 1000 pto.



- 2013 JOHN DEERE 946 Mo-Co** 13 ft. discbine mower conditioner, 1000 pto.
- 1992 JOHN DEERE 3950** silage cutter.
- New Holland 256 side delivery 9 ft. hay rake.

## LIVESTOCK RELATED



- New Holland 358 mixermill** w/ Forster auger, shedded.
- Highline 6800 bale processor**, hyd. left hand discharge, 1000 pto.



- NH 195 t/a manure spreader**, upper beater.
- 1 & 1½ Ton gravity feed wagons.
- (60) Heavy Duty 24 ft.** freestanding panels.
- (10)- Heavy duty 24 ft. + 10 ft.** gate panels.
- Portable livestock loading chute.
- (12) - 10 ft. metal panels.
- (28) - 10 Ft. metal feed troughs.
- (17) Round bale feeders. ●Poly water tanks.

## TRAILERS



●**2013 Featherlite 20 ft.** gooseneck t/a aluminum stock trailer w/ 2 divider gates, LT235/85R16 tires, 7 ft. wide, GVWR = 14,000 lb., 1 owner.



- 2013 PJ 33 ft.** (27 ft. + 6 ft.) tri-axle gooseneck drop deck flatdeck trailer, GVWR = 21,000 lb., winch, toolbox, 8 ft. wide deck.
- 1976 Trail Rite 22 ft. gooseneck flatdeck trailer.
- 18 Ft. (L) X 10 ft. (W) 6 Round bale hauler trailer.

## VEHICLE & GRAIN TRUCK



- 2002 DODGE 2500 regular cab truck**, only 91,268 km, 4x4, Cummins 24 valve turbo diesel engine, manual transmission, 5<sup>th</sup> wheel hitch, spray in box liner w/ cover, LT245/75R16 tires.
- 1980 Ford 800 s/a grain truck** w/ 18 ft. wood box & hoist, 429 gas motor, 11R22.5 tires, 10F/2R.

## MISCELLANEOUS



- International 510 double disc seed drill**, 12 ft., 6" spacing, grass seed attachment, shedded.
- 2015 Cub Cadet RZT zero turn lawn mower.
- Solar 230 amp AC welder w/ cables.
- Horse tack.
- Honda 2500W generator.
- (4) - Western saddles.
- ±25 Pallets w/ farming related items- see website.

**VIEWING HOURS: 9 AM – 6 PM starting May 25**

**NO BUYER'S PREMIUM – REGISTER TO BID @ TIMED.DUNKLEAUCTIONS.COM**

# DUNKLE AUCTION SERVICES

Follow us  
on Facebook



[www.dunkleauctions.com](http://www.dunkleauctions.com)

Sale Site: Dorothy - (780)-781-0571

Dunkle Auctions: 1-877-UP4BIDS (874-2437)



**NO BUYER'S  
PREMIUM**

AB License #209769